



Motorised Z-Axis
Pneumatically driven
Easy Fixture Mounting
4000 Embedded Controller

BenchScribe



BenchScribe

Convert standard BenchDot machines to scribe mark on parts. Choose between diamond or carbide tipped stylus.

Applications Include:

- Programmable Marking • Component Identification • Component Traceability • Serial Numbering
- Logo Marking • Security Marking • Health & Safety Appliance Marking • Certification Marking
- Decorative Trophy & Award Marking • Time & Date Marking • Part Numbering
- Batch & Shift Coding • Calibration Systems • Label & Tag Marking

intelligent marking solutions

TECHNICAL SPECIFICATIONS

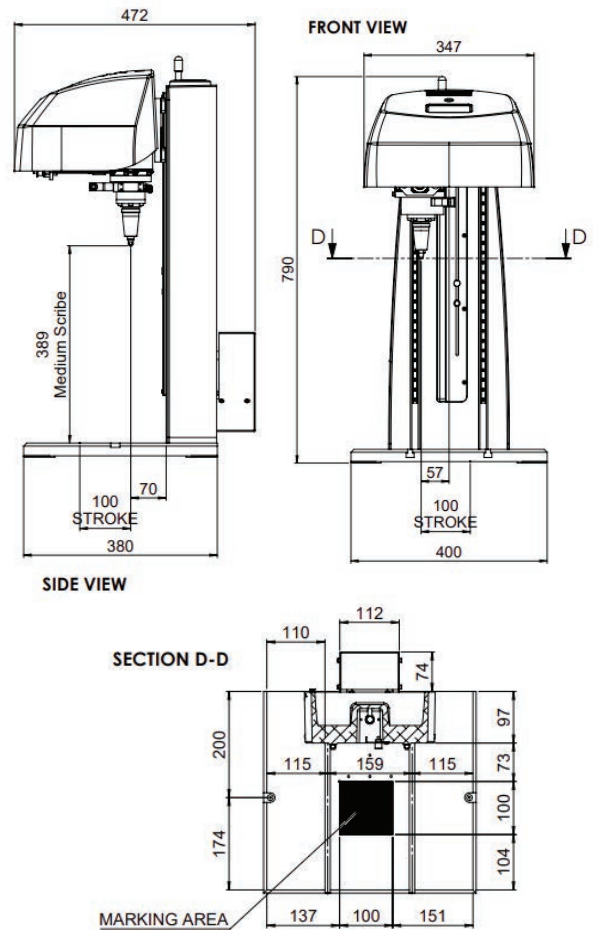
BenchScribe

Marking Area	100mm x 100mm (standard) 150mm x 150mm (optional) 300mm x 150mm (optional)
Dimensions	W: 400mm, H: 790mm, D:433mm With digital z-axis(optional) W: 400mm, H: 790mm, D:471mm Note: 300 x 150 head cover is wider than the base W: 515mm
Supply Requirements	240V 50Hz / 100V 60Hz 6 bar (87psi) non-lubricated, dry
Weight	>40kg depending on size and options
Operating Temp.	0°C-80°C (32°F-176°F)
Nosepiece & Stylus	Diamond-tipped or tungsten carbide stylus, 110°
Marking Type	5 x 7, 7 x 9, Varidot, HPGL, BMP Logos
Construction	Cast aluminum column and base, metal internals and plastic cover
Workpiece hardness	Max. 62 HRC (800HV)
Controller	4000
Character Sizes	0.15mm-99.9mm in 0.15mm increments (standard) 0.15mm-150mm in 0.15mm increments (optional) 0.15mm-300mm in 0.15mm increments (optional)

Features

- 4000 Embedded Controller
- Pneumatically driven scribe marking
- 110°, diamond-tipped or tungsten carbide stylus
- Flat, machined base for easy fixture mounting
- Ball-screw mechanism ensures high precision
- Motorised z-axis to allow quick and simple setup

BenchScribe 100-100

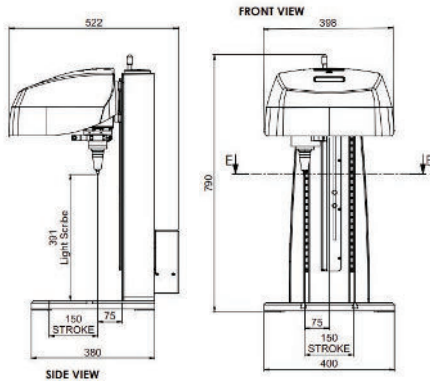


COMPATIBLE ACCESSORIES	DESCRIPTION	PRODUCT CODE
T-slotted Base - Extruded	For attaching fixtures to the base; extruded aluminum 45mm pitch	ACCBDBT01
Single Label Fixture	For right angled labels/parts 35-100mm x 20-75mm x .05-2.0mm	ACCBDFX

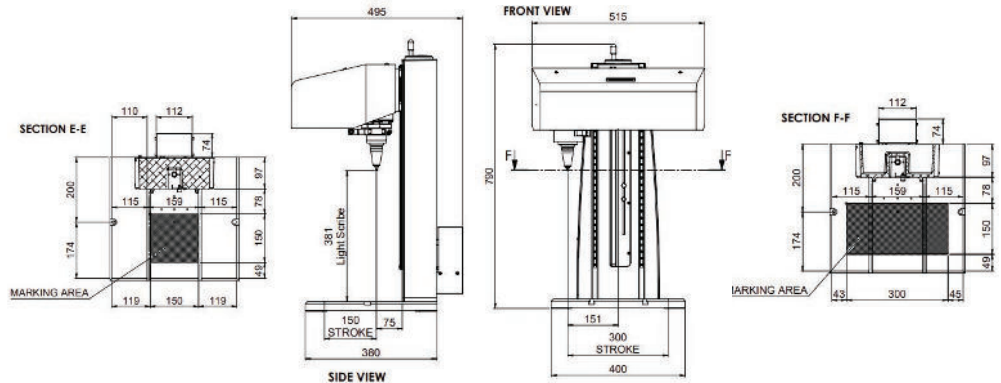
OPTIONAL VERSIONS	BENEFITS / REQUIREMENTS	OPTION CODE
150 x 150mm marking area	Larger marking head for increased markable area	MCYBS1515E
300 X 150mm marking area	Larger marking head for increased markable area	MCYBS3015E
PC-based Software	Drag and drop editor, user admin rights, connectivity	OPTM2019A
Column Extension - 110mm	Increases column height and mox component height by 110mm	OPTBDCE110
Column Extension - 200mm	Increases column height and mox component height by 200mm	OPTBDCE200
Integrated Camera	Verification of mark quality; requires PC and software Automatic alignment of mark against existing features	OPTVISRS/VS OPTVISMS



BenchScribe 150-150



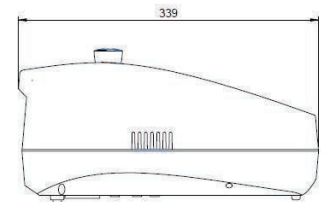
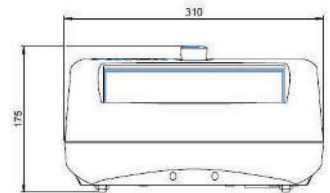
BenchScribe 300-150



TECHNICAL SPECIFICATIONS

4000 Embedded Controller

Dimensions	W: 310mm, H: 175mm D:339mm
Supply Requirements:	
Standard	240V 50HZ / 100V 60HZ
Optional	36V 3.0AH LI-Ion battery, or External power supply
Weight	5kg
Screen	10.4" resistive touchscreen - can be used with gloves
Operating Temp.	0°C-80°C (32°F-176°F)
Marking Type	5 x 7, 7 x 9, Varidot, Angled, Arc, Logos, Data Matrix, Serial Numbers, Reverse Marking, Variables, etc.
Languages	English, German, French, Italian, Spanish, Portuguese, Swedish, Finnish, Russian, Polish, Czech, Dutch, Chinese
Connections:	
Standard	X-Y Axis Control, USB-A, USB-B, RS232, Start/Stop Box,
Optional	External E-Stop, Z-C Axis Control, TCP/IP Ethernet, Anybus



Embedded Features

- USB type A, USB type B and RS232 ports, for connecting to optional USB drive, barcode scanner, USB keyboard and PC. Firmware updates via USB drive.
- 2 axis control (X-Y marking directions), with robust high power motor drivers
- Live view of layout during jogging/drag and drop repositioning of layout.
- Duplicate check of last 100 marks within 1 of 5 different logs of marks.
- Data logging to .csv file on USB stick or internal memory
- Animated demonstrations of common functions
- Password security for all menu items
- Built in emergency stop



When identification is critical for traceability or product impact, a quality mark is required. Monode combines creative engineering with a full range of marking solutions to meet your needs. Over a half-century of progress as a trusted "parts marking problem solver" ...that's Monode!



Quality Marking Equipment with Integrated Machine Vision Solutions