

HOW TO ORDER CUSTOM MADE FABRIC STENCILS

FIGURE 1

THE **FLAT STENCIL** ALLOWS VERSATILITY AND ECONOMY FOR MANY APPLICATIONS FROM SMALL TO LARGE.



Anatomy of a stencil

(See Figures 1, 2 & 3)
MARKING METHOD

A "Flat Stencil" (Fig. 1) is used in Hand Marking
MANY SIZES ARE AVAILABLE TO SUIT YOUR UNIQUE APPLICATION
Will this stencil be used with a semi-automatic system?

A "Cap" (Fig. 2) or "Insert" (Fig. 3) may be needed to fit your AM25 head.

(See Figure 1)

OVERALL STENCIL SIZE

A-OVERALL WIDTH x B-OVERALL LENGTH allow ample room to use the stencil.

NUMBER OF IMPRESSIONS

will be spaced evenly on Flat Stencils unless requested otherwise.
Consider marking head size so surrounding impressions are not etched.

(See Figure 4)

AVAILABLE MARKING AREA

Height x Length or Inner Diameter / Outer Diameter or as specified on part print.

(See Figure 5)

CHARACTER SIZE

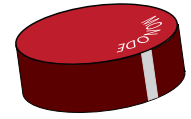
Please note the unit of measure (inches, mm's, point)

(See Figure 6)

EXACT LEGEND -

See the suggestions in the "F.A.Q. WHEN ORDERING CUSTOM MADE FABRIC STENCILS" or supply a high resolution vector file.

FIGURE 2



THE **CAP** TYPE STENCIL ALLOWS MOUNTING ON A MARKING HEAD THESE CAN BE MADE IN ROUND, RECTANGULAR OR EVEN CONTOURS TO FIT CURVED SURFACES OR DONUT SHAPED TO FIT OVER A PROTRUDING SURFACE.

FIGURE 3



THE PLASTIC FRAME ON AN **INSERT** ALLOWS MOUNTING ON A MACHINE OR EASE IN MANY HAND MARKING APPLICATIONS.

FIGURE 4

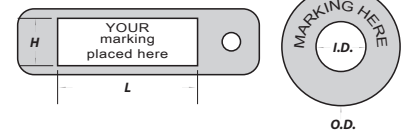


FIGURE 5

CHARACTER SIZE TEST MARK
CHARACTER SIZE MONODE, INC.

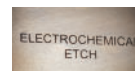
FIGURE 6

TEST MARK
MONODE, INC.
U.S.A.

FIGURE 7



DEEP ETCH



SURFACE ETCH

RE-ORDER NUMBER

A unique item number assigned to your custom art when you purchase a stencil. Use this number to duplicate a previously made stencil. It can also be referred to as an example when a similar item is needed. For your convenience, the re-order number can be found on the Stencil, the Packing Slip, and your Order Acknowledgement.

FABRIC TYPE

Is your application requirement for a surface etch or deeper mark?

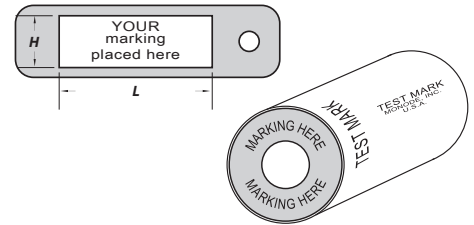
FABRIC COLOR

Our fabric stencils can be dyed either Red or Green (Fig. 2 and 3), Green - more translucent (to see through to your part) Red - easier to see the impression on the fabric. Either color will provide a great mark.

F.A.Q. WHEN ORDERING CUSTOM MADE FABRIC STENCILS

Where will you make your mark?

Available Marking Area - Send a drawing or sketch with dimensions. If mark is on radius, show both the inner diameter and outer diameter of marking area. Make allowances for bevels, chamfers, radii, etc. which limit the marking area. Double-check references to diameter vs. radius. If pitch diameter or pitch radius is shown, be certain that the character height fits on the surface to be etched.



What is the alignment of your Mark?

Indicate on above sketch if mark is to be centrally located, flush left or right. Centered, nearer inner diameter or outer diameter for rounded parts. Will the characters face inward or outward? Also show limitations such as spacing of bolt-holes, shoulders or other interferences.

TEST MARK
MONODE, INC.
USA

TEST MARK
MONODE, INC.
U.S.A.

TEST MARK
MONODE, INC.
USA

How should your mark look?

Style and Height of Each Line - Distinguish the style or font name and height of each line of lettering, figures, etc. when known. Monode can also size your text to fit your specific marking area. Applications can fall into a wide spectrum from ornate and decorative logos to basic, easy to read part numbers.

CHARACTER SIZE TEST MARK
CHARACTER SIZE MONODE, INC.

Your Mark Here

Go Ahead...
Mark my Day

Exact Legend?

Paying particular attention to commas, dashes, extra spaces, periods or no periods in legends like U.S.A., USA, PSI, etc. DO NOT USE QUOTATION MARKS, or PARENTHESES in legend sketch, UNLESS YOU WANT THEM TO APPEAR IN THE LEGEND. Custom logos should have size specification and show where they are located in relation to other design components. You may electronically send us high resolution vector files, we will be happy to evaluate them for suitability for use with your etching requirements.

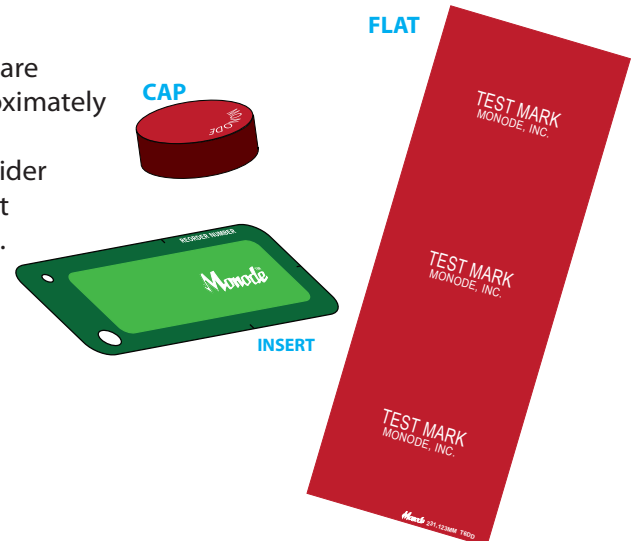
TEST MARK
MONODE, INC.
U.S.A.

"COMPANY NAME"
SER. NO. 17AXXX
ALL UPPER CASE

YOUR
LOGO
P/N 12345
220V
50/60 Hp
Made in USA

How many pieces are to be marked?

Number of times legend is to appear on Stencil - When several marks are to appear on a single stencil, normal spacing would provide for approximately even spacing on the desired sheet, unless specified otherwise. Allow room for masking / material handling between marks and consider the size of the marking head that will be used so nearby marks are not inadvertently etched. Additional sheets may be needed for large runs.



What method will be used to apply the mark?

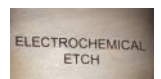
The type of stencil you'll need: A **flat stencil sheet** will serve for most hand marking applications. If an automated system is used a **cap stencil** or an **insert stencil** would likely be the preferred choice. (See examples) If a special locating fixture is to be used to hold your part, your stencil can be designed to accommodate it.

Is your application requirement for a surface etch or deeper mark?

If so, we have fabrics that will hold up to the deep etching process. A fine lined decorative design or small character size for surface etching would require a finer fabric. Let us know and we will choose the best fabric for your application.



DEEP
ETCH



SURFACE
ETCH

NOT SURE? ASK US!

VISIT OUR WEB SITE: WWW.MONODE.COM • Sales@Monode.com

PHONE (440) 975-8802 • FAX (440) 975-8836