



High Speed Portable Marker  
Easy to Use  
Quiet, Fast, Efficient Marking  
Large Marking Area

## PortaDot™ 60-30 Touch



### Portable Handheld Dot Peen Marking Machine

Portable, fully programmable, high speed dot marking machine for use in all environments where bringing the marking device to the work piece is a prerequisite. Uncompromising build quality and lightweight design ensure the P60-30 Touch marking system is suitable for use in virtually any environment.

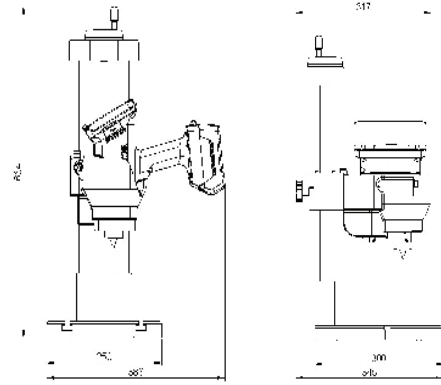
#### Applications Include:

- 2D Data Matrix Marking • Component Traceability • Steel Stock Marking • Serial Numbering
- Chassis VIN Marking • Time & Date Marking • Cast & Forge Marking • Part Numbering
- Batch & Shift Coding • Programmable Marking • Component Identification • Production Line Integration

intelligent marking solutions

## TECHNICAL SPECIFICATIONS

|                               |  |
|-------------------------------|--|
| <b>Marking Area</b>           | 60mm x 30mm  |
| <b>Stylus</b>                 | 50mm x 90° stylus, spare 50mm x 120° stylus                            |
| <b>Std. Character Sizes</b>   | 0.19mm - 59.9mm in 0.19mm (5x7 front) or 0.25mm increments (7x9 front) |
| <b>Dot Mark output styles</b> | 5x7, 7x9, Varidot, HPGL, BMP Logos, QR Codes, 2D Data Matrix           |
| <b>Weight</b>                 | Marking head/battery 3.7kg   |
| <b>Battery</b>                | 36V, quick changeover  |
| <b>Battery Charger</b>        | AC Input 50/60Hz; 100-240VAC   |
| <b>Dimensions</b>             | 295mm (H) x 170mm (W) x 303mm (L)                                      |



\*Note - Base/Column and hand held marker supplied separately.

### Technology

Featuring patented technology to ensure that the marking force does not deteriorate as the battery power depletes, the brand new integrated control system has evolved from the already highly successful 4000 Series controller. With many of the same functions and features, all packaged within the marking head for ultimate mobility.

### Easy to use out of the box

Extremely versatile, lightweight and mobile marking machine with a marking window of 60mm x 30mm, powered by a Bosch 36V battery for "all day" use.

Marking layouts can be created, edited, and saved directly on the marking machine using the 5.7 inch touch screen display - to easily locate and load whenever each is needed.

### Features

- All in one marking solution with touchscreen control
- Easy to use
- All marking data backed up to internal storage with an option to export via USB
- Robust precision mechanics
- Country specific mains charging cable
- Carry case with precision cut foam inserts

### Options

- Additional 36V Bosch Battery
- Bench style base and column mount
- Face-mask extender



*When identification is critical for traceability or product impact, a quality mark is required. Monode combines creative engineering with a full range of marking solutions to meet your needs. Over a half-century of progress as a trusted "parts marking problem solver" ...that's Monode!*



**Quality Marking Equipment with Integrated Machine Vision Solutions**