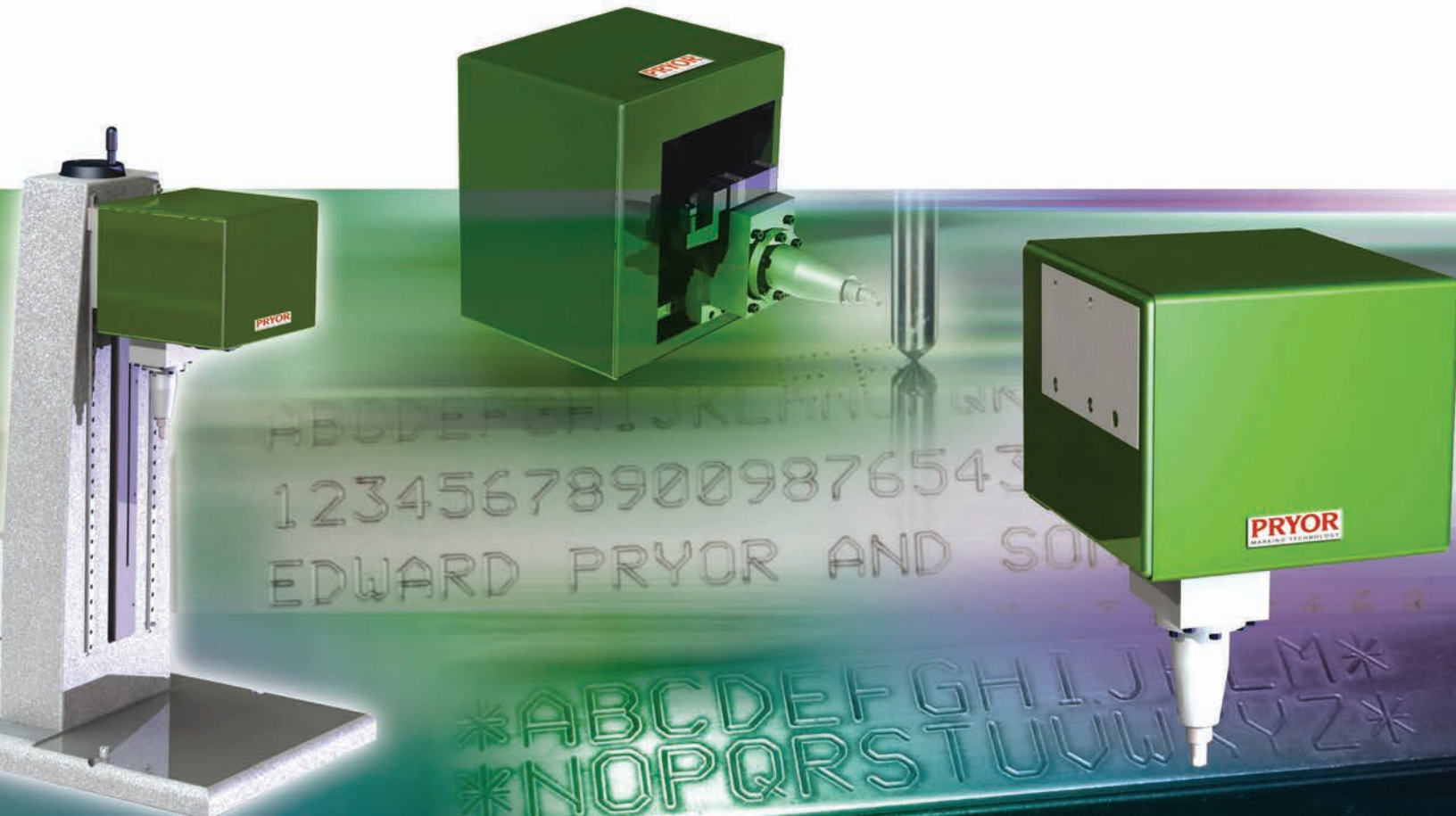


Scribing Range



Marktronic™ Scribing Product Range

BenchScribe™: Benchtopy, Column Mounted:

Marktronic™ BenchScribe™ 60-60SP
Marktronic™ BenchScribe™ 100-100SP
Marktronic™ BenchScribe™ 150-150SP
Marktronic™ BenchScribe™ 300-150SP

InScribe™: Integrator:

Marktronic™ InScribe™ 60-60SP
Marktronic™ InScribe™ 150-150SP
Marktronic™ InScribe™ 140-40DSPH

TECHNICAL SPECIFICATIONS

For more technical details, please visit our website at www.monode.com

Marktronic™ 3000 Scribe Marking Range			
BenchScribe™	InScribe™	Marking Area	Stylus Available
60-60SP	60-60SP	60mm X 60mm	Diamond or Carbide
100-100SP	N/A	100mm X 100mm	Diamond or Carbide
150-150SP	150-150SP	150mm X 150mm	Diamond or Carbide
N/A	140-40SDPH	140mm X 40mm	Carbide
300-150SP	N/A	300mm X 150mm	Diamond or Carbide

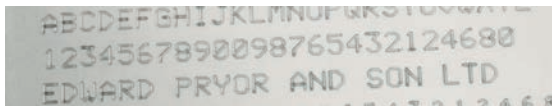
Electrical Supply: 220v 50Hz, 110v 60Hz



Wide Range of machines to suit all scribing applications

Marktronic™ 3000 Scribing Models

The scribe marking range uses a pneumatically actuated diamond or carbide pin to create a continuous line mark by scribing the mark into the material. The process is high speed, virtually silent and creates a high quality mark on a wide range of materials.



Marktronic™ BenchScribe™ 60-60SP Mark

Marktronic™ 3000 Scribing SP and SDPH Models

The SP range uses a diamond or carbide tip and is ideally suited to marking small to medium characters. The SDPH (Scribing - Deep Pneumatic - Heavy Duty) range features a powerful carbide tip actuator with a robust high torque motor driven X-Y mechanism. Originally developed for VIN marking applications, the 140-40SDPH model is perfect for high speed, deep marking applications.



Marktronic™ InScribe™ 140-40SDPH Mark

Integration Features

Our scribe range control units provides many interfacing options and modes of operation. The controllers' 24v digital input/output port features 8 inputs and 6 outputs. These can be programmed using a simple scripting language for custom machine control. The 2 x RS232 serial ports may also be configured for downloading marking data and controlling the marking system. In addition, an optional TCP/IP Ethernet port allows multiple systems to be controlled from a central server.



3000 series controller

Wide Range of Options

Hardware, software and after sales options ensure the Scribe marking range meets your exact needs.



InScribe™ 140-40SDPH



Professional Custom Designed Systems



When identification is critical for traceability or product impact, a quality mark is required. Monode combines creative engineering with a full range of marking solutions to meet your needs. Over a half-century of progress as a trusted "parts marking problem solver" ...that's Monode!



Quality Marking Equipment with
Integrated Machine Vision Solutions