

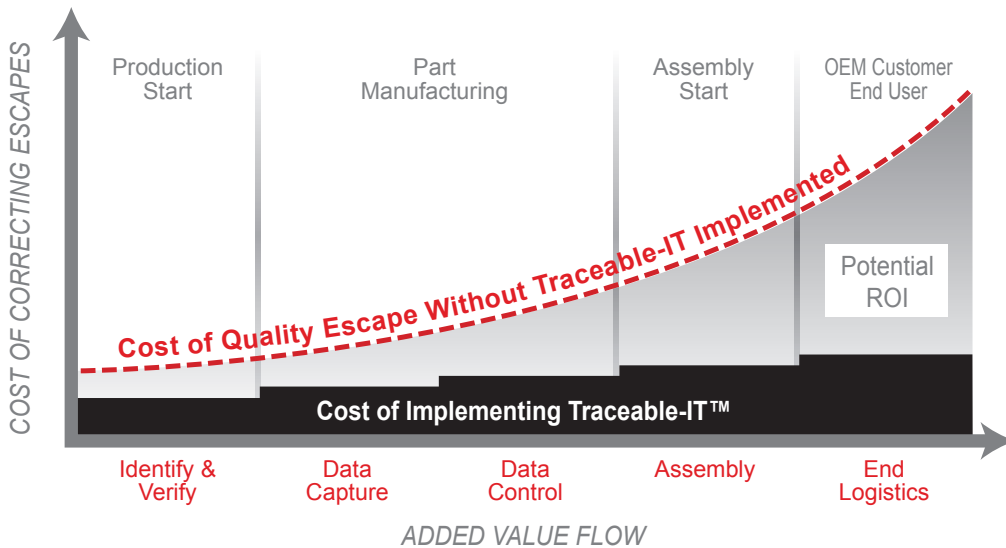
Software Solutions for any size business

	T1	T2	T3	T4	T5
User Manager – Tiered security settings, Database (Access & SQL)	•	•	•	•	•
Documentation & Help	•	•	•	•	•
Project Designer – Make & design marking projects with ease	•	•	•	•	•
Gray Screen – Simple one-click user interface for production	•	•	•	•	•
1 Marking Plug-in	•	•	•	•	•
Updates & Maintenance		•	•	•	•
Reader Support		•	•	•	•
Database Binding – All databases			•	•	•
Verification Support			•	•	•
Multiple Marking Plug-ins (On one machine)			•	•	•
User Manager – Enterprise database backbones			•	•	•
M2V – Configurable step-by-step workflow UI			•	•	•
Custom UI				•	•
Enterprise-Level Support				•	•
Customized to specific requirements					•

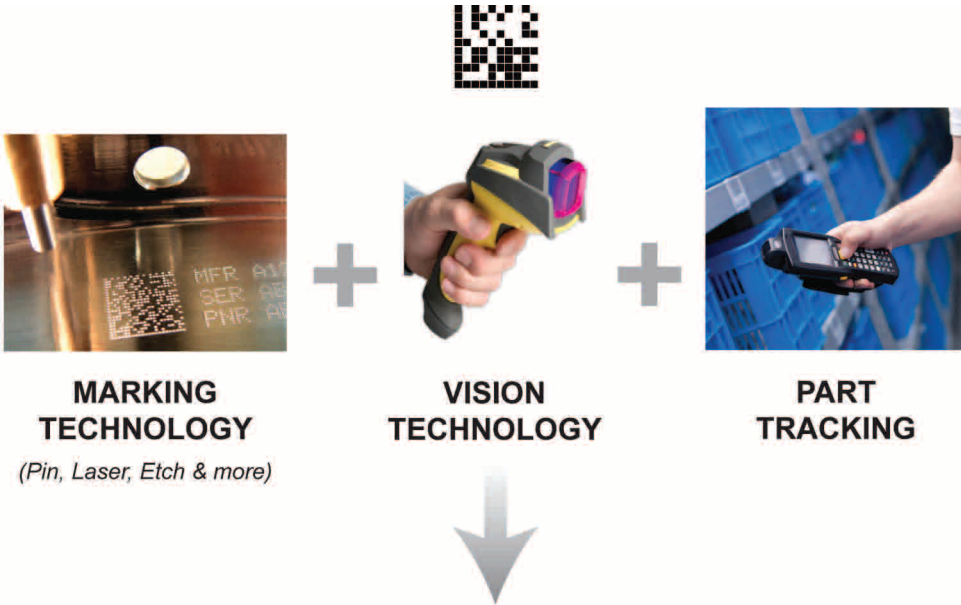


TRACEABLE-IT

Traceable-IT can save during the production and installation lifecycle of a part.



Traceable-IT tracks parts throughout the entire manufacturing lifecycle. Utilizing a patented process, Traceable-IT provides a multitude of part identification solutions powerful enough to meet all standards and traceability requirements. A flexible database structure stores and enables real-time reports to optimize production decisions, manage inventory and better control manufacturing costs.

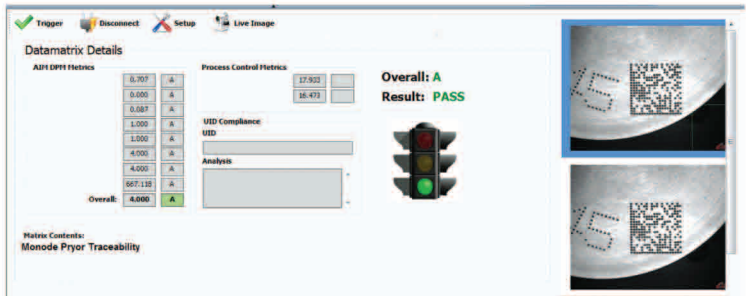


MARKING TECHNOLOGY
(Pin, Laser, Etch & more)

VISION TECHNOLOGY

PART TRACKING

EASY, END-USER INTERFACE



A CLOSER LOOK AT ADVANCED CAPABILITIES:

From Straight, Angled, Curved Text to Machine Readable Marks:

Place text in any orientation and location to meet marking needs. In addition, add value to products by marking 2D codes.

VERIFICATION STATION:

Use metrics to ensure marks are properly made and read.

UID COMPOSER, VAL-ID-DATA, DATA INTEGRITY PLUG-IN:

Foolproof Item Unique Identification (IUID), syntax to comply with all marking standards, part level tracking and reporting requirements.

Automated Data Exchange (Database Binding):

Take operator error out of marking data input.

Log all marks and ensure uniqueness where required.

Access Control Gateway (User Manager):

Hierarchical control permissions for all aspects of marking and traceability. Clearly defined user roles and rights for each employee.

EVENT LOGGING:

Click-level logging of all interaction with the traceability process.

EVENT REPORTS:

Easy to read, succinct reports detailing all aspects of operator system interaction.

ENTERPRISE MANAGEMENT:

Central management of all user rights and data logging.

Tracking Stations (Touch Points):

Leverage parts marking to track processes across all aspects: manufacturing, quality control, logistics, etc.

TRACEABILITY REPORTS:

Cradle-to-grave reporting capabilities for parts and processes.

EXTERNAL SYSTEM LINKS:

Share data between other shop floor systems via OPC and database connections.