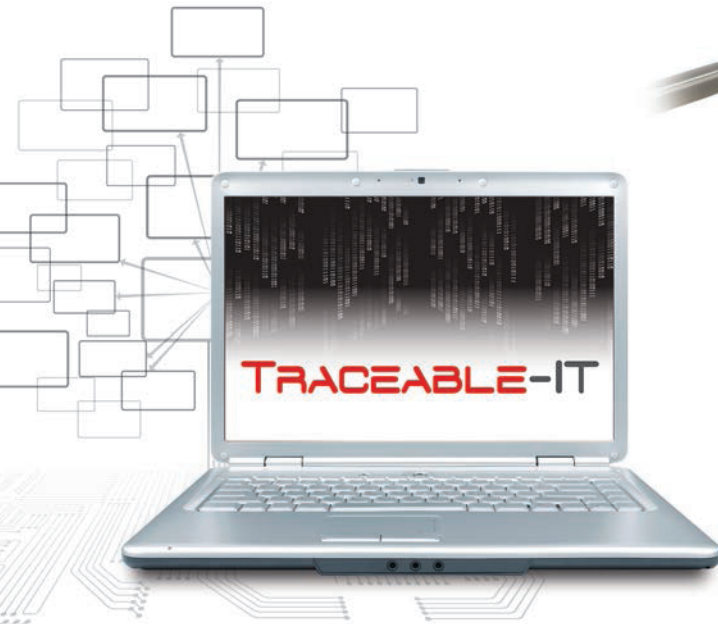


# The UDI Solution

With the emerging needs in the UDI community Monode is positioned locally and globally to help your company go beyond compliance to show true Return On Investment to your marking needs.

Monode is a founding member of the marking industry. Monode has also partnered with Pryor Marking to create a joint venture, Monode Pryor Traceability. Combined, we represent over 200 plus years as OEM's in the parts marking industry, We make the equipment, we write the software, we help write and maintain standards. We are the marking industry! Our company does not simply react to market demand, we shape the future of the marking industry overall.



## Our extensive experience and services include:

- COTS marking products
- Custom engineered marking solutions
- In house or on-site training
- Contract marking
- GSA schedule
- Full UDI compliance software suite
- Program management and consulting services
- And more....

*Worldwide Solutions for Marking and Traceability*



[www.traceable-it.com](http://www.traceable-it.com)  
[www.monode.com](http://www.monode.com)

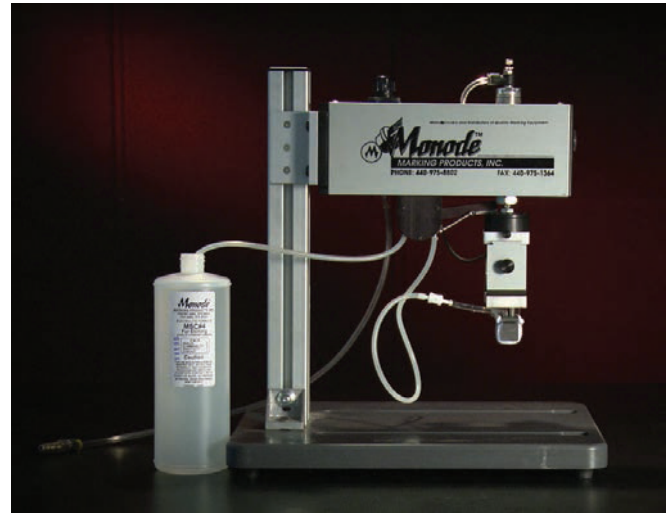




The most complete line of marking products



Electrochemical Etching - Power Units



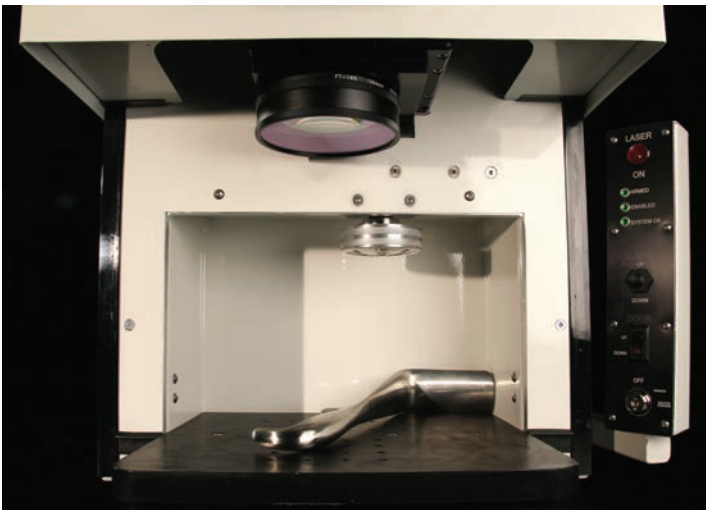
The world leader in etching technology  
Semi automatic marking



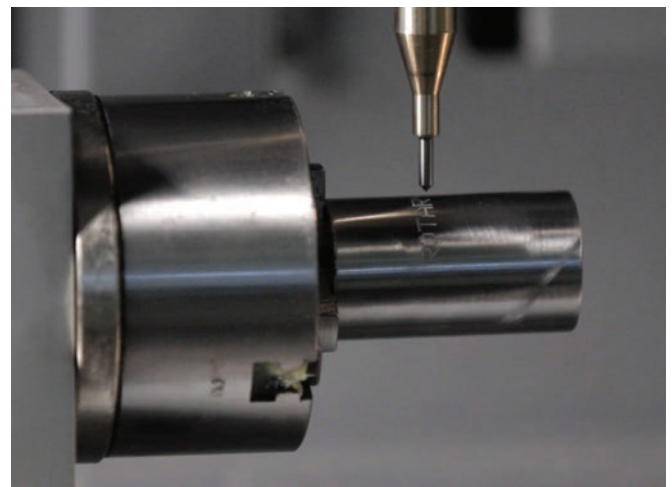
Standard and custom machine vision solutions



Full line of standard and custom steel stamps



The industry born marking laser



The defining leader in quality pin marking

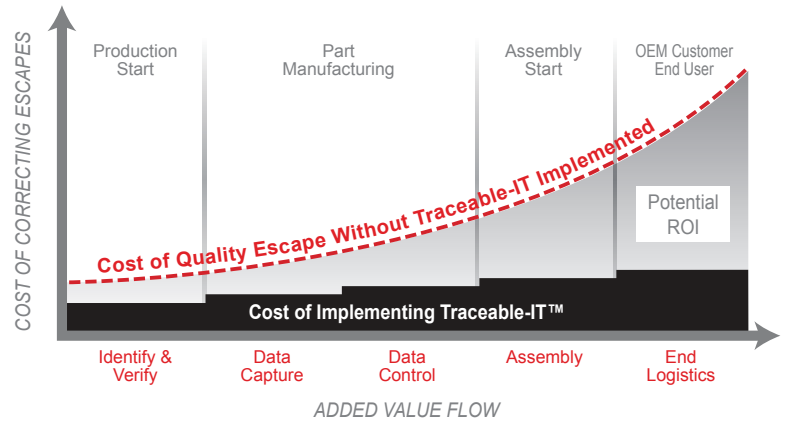
# Full UDI compliance software suite

## TRACEABLE-IT

From simple part identification to a fully integrated process using machine readable barcodes, Traceable-IT is the premier solution for marking, validating and tracking parts.

Traceable-IT is a versatile software suite engineered to meet the needs of all industries.

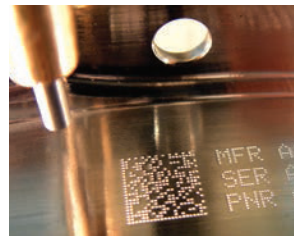
Traceable-IT can save during the production and installation lifecycle of a part.



### HOW IT WORKS

Traceable-IT tracks parts throughout the entire manufacturing lifecycle.

Utilizing a patented process, Traceable-IT provides a multitude of part identification solutions powerful enough to meet all standards and traceability requirements. A flexible database structure stores and enables real-time reports to optimize production decisions, manage inventory and better control manufacturing costs.



#### MARKING TECHNOLOGY

(Pin, Laser, Etch & more)



#### VISION TECHNOLOGY



#### PART TRACKING

#### EASY, END-USER INTERFACE



For more information:  
[www.traceable-it.com](http://www.traceable-it.com)



When identification is critical for traceability or product impact, a quality mark is required. Monode combines creative engineering with a full range of marking solutions to meet your needs. Over a half-century of progress as a trusted "parts marking problem solver" ...that's Monode!



Quality Marking Equipment with  
Integrated Machine Vision Solutions