

Digital Power Units



Electrochemical Etching Power Units

Provides a low voltage secondary power supply that can be switched between AC and DC output. Most power units provide between 6-44 volts output, controllable via rheostat.

All of our etching power units contain either an internal thermal overload or an external fuse for operator protection, and feature banana jacks or polarity receptacles for use with cord sets.

Applications Include:

- Component Identification • Component Traceability • Serial Numbering • Logo Marking
- Security Marking • Health & Safety Appliance Marking • Certification Marking
- Decorative Trophy & Award Marking • Time & Date Marking • Part Numbering
- Batch & Shift Coding • Calibration Systems • Label & Tag Marking



M-450E: Programmable Digital Power Unit

- Surface marking or deep etch with AC or DC current
- Ten program files to save different etch parameters
- Programmable power and pulse settings
- Semi-automatic marking with the AM-25
- Capable of making safe, legible and low stress marks
- Pinnacle of production capability



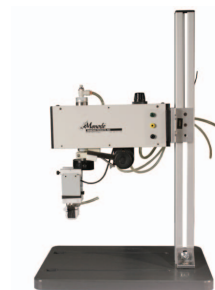
M-550E: Programmable Digital Deep Etch Power Unit

- Save specific etch parameters in ten convenient files
- Program files with AC or DC current and/or DC to AC current
- Capable of marking more than 0.006" deep in most substrates
- Control power and pulse settings
- Semi-automatic marking with the AM-25
- Conforms to MIL STD 130 and DOD UID requirements



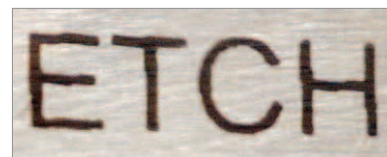
AM-25

- Used for fast, accurate production marking
- Quick change marking heads
- Pneumatic marking speeds
- Anodised aluminium construction
- T-Slot corrosion free plastic base
- Capable of up to 1800 cycles per hour



Shallow Etching

- Approximately .001 to .0001 of an inch deep
- Mark is typically produced in less than a second
- Impression is dark in color
- Results from a deposit of a contrasting surface mark



Deep Etching

- .001-.003 inches deep
- If etches greater than .003 inches are required a pulsating power unit with timer is recommended
- Used with a heavy duty power unit with DC current to remove metallic ions from the base material



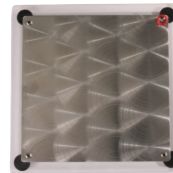


MBG- Basic Marking Kit

- Contains basic equipment for the Monode marking method
- Choose from 5 Monode power units:
 - M-150E
 - M-311E
 - M-450E
 - M-550E



- Kit Includes:
 - Bench fixture- B-2045
 - Applicable Wire Set
 - MSC 4 Electrolyte
 - ESN Neutralizer
 - Holder for hand marker- H100
 - Hand marker- HM50150
 - Deep etch pads - DE50150
 - Hand ground
 - 12" x 12" grounding plate



When identification is critical for traceability or product impact, a quality mark is required. Monode combines creative engineering with a full range of marking solutions to meet your needs. Over a half-century of progress as a trusted "parts marking problem solver" ...that's Monode!



Quality Marking Equipment with Integrated Machine Vision Solutions