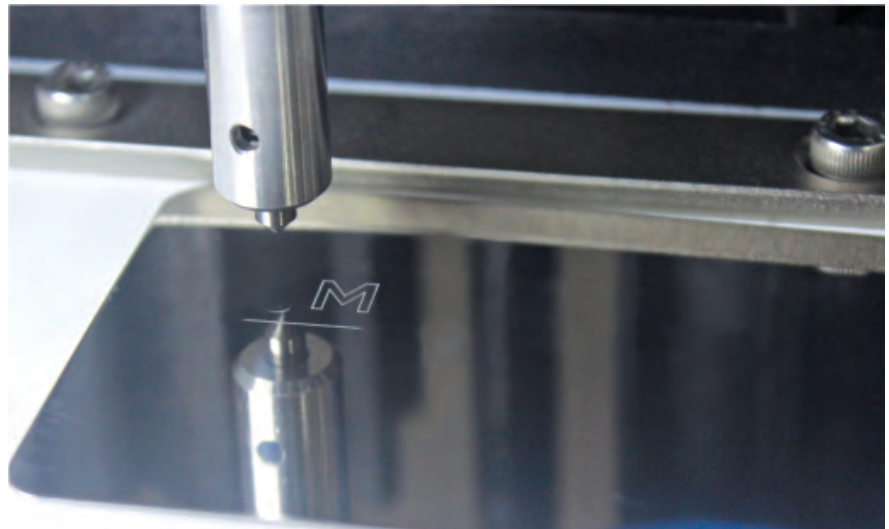


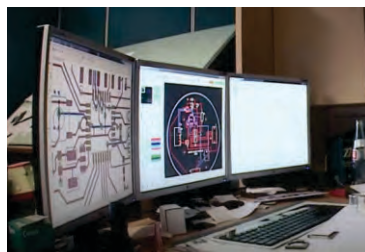


Monode Marking Products has over 60 years of industry related experience in providing **Direct Part Marking Solutions** to sectors in Automotive, Aerospace, Medical, Gas and Oil and many other industries that require direct part marking solutions.



An experienced and enthusiastic team of people ready to provide the best level of support necessary to ensure your success.

Design to Order and off the shelf solutions available for each of the technologies we offer. All products are designed & manufactured using the latest technologies available as well as the many years of industry experience in proper design consideration.





Automotive Industry and  
Tiered Suppliers



Steel  
Construction  
Mining



Military, Aerospace, Armament,  
Medical Devices



Transportation Industry  
Railways  
Civil Engineering



Oil & Gas  
Material Handling

Design & manufacturing of machine solutions since 1956, built to provide years of durability, reliability and exceptional quality.

## Global Reach



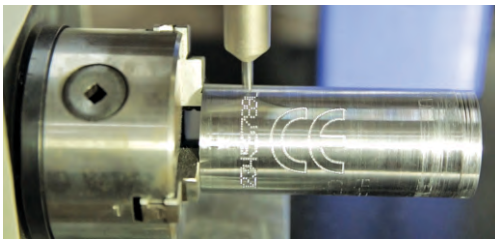
- ◆ Poland
- ◆ Germany
- ◆ Colombia
- ◆ Brazil
- ◆ Denmark
- ◆ France
- ◆ Portugal
- ◆ Spain
- ◆ Italy
- ◆ Austria
- ◆ Estonia
- ◆ Russia
- ◆ South Korea
- ◆ UK
- ◆ Ecuador
- ◆ USA
- ◆ UAE
- ◆ India

We are actively seeking Manufacturers Representatives and Distribution Partners in all countries including USA.

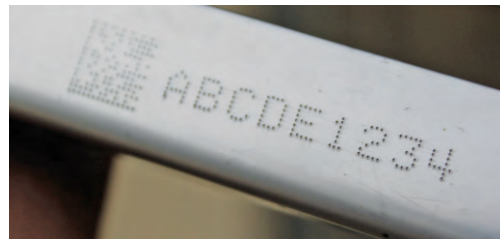


## Dot Peen Marking

Dot Peen marks are permanent, capable of depths up to 0.020 deep on some materials and offer high quality, high speed marks. Machines can mark on metals with a hardness up to 62HRC, plastics, wood, glass, sand molds, etc. Dot Peen is a cost-effective permanent marking process for all type of markings ( text, logo, data matrix, QR Code ) on both metal & plastic components.



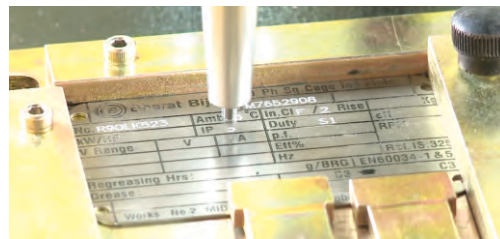
Rotary Marking on Steel



Marking on Plastic



Marking on Flange



Name Plate Marking



Portable Machine

### Materials Marked:

- ◆ STAINLESS STEEL
- ◆ ALUMINUM
- ◆ TITANIUM
- ◆ COPPER
- ◆ PLASTICS
- ◆ BRASS
- ◆ WOOD
- ◆ STEEL

## Technology

Electromagnetic marking technology utilizes an electromagnetic coil that fires the carbide stylus against the component to produce the impact. The depth is managed by the distance between stylus tip and part surface as well as an electronic *Force* setting, providing an accurate and repeatable mark. **NO AIR REQUIRED.**

## Range of Machines

Cordless handheld markers designed for industrial use. Mobile and sturdy with POLY rigid body, suited for marking on heavy, large and difficult to access components. Can also be mounted on a column to provide fixed and mobile marking solutions.



Column mounted machines most suitable for bench top operator applications, available with customized fixtures, Electric Z Axis, Autosense, Rotaries, Tag Feeders and Flip Carts.

Integration heads with touchscreen controllers are designed with a compact footprint allowing for easy integration into existing or new applications. Buss Protocols for communication to major brand PLC's available along with bellows for protecting motion hardware.



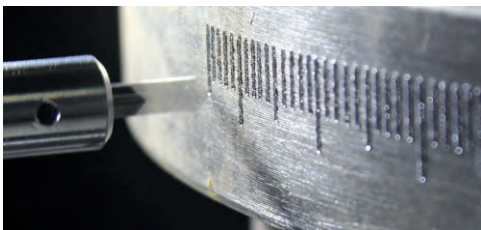
## Integration Heads



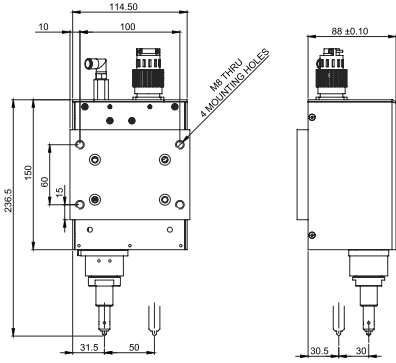
## Range of SIA Machine

Model Name	Marking Window (mm)	Weight
I1	50 x 30	2.5 Kg
I2	80 x 30	2.7 Kg
I3	150 x 50	3 Kg
I4	120 x 100	7.3 Kg

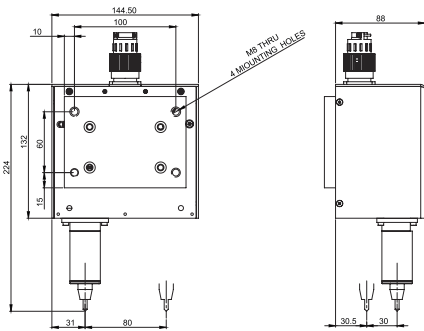
- ◆ Compact marking heads for easy placement and approach on automation devices
- ◆ Mounting with 4 M8 Screws for secure and safe mounting
- ◆ Small heads available with Regin Bellows for protection from dust and ingress
- ◆ Large windows size of 50x30 mm in a very compact form factor
- ◆ Rugged Aluminum construction to suit industrial environments
- ◆ Linear X & Y Axis for consistent depth across the complete marking window
- ◆ Multiple Stylus Assemblies to choose from depending on application requirements
- ◆ Military grade secure connection to the controller
- ◆ Connecting cables available in multiple lengths to suit application location
- ◆ Use optional holding stands for table top working



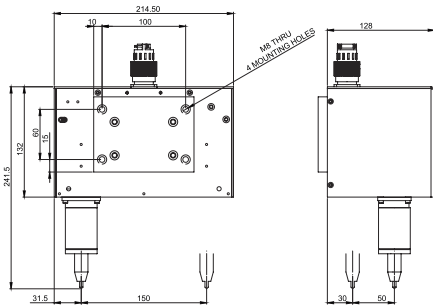
I1



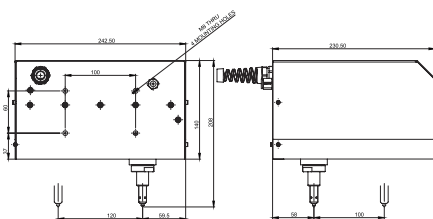
I2



I3



I4





# M3

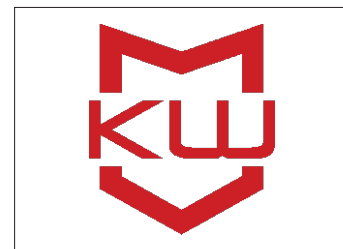


**Specifications:**

- Model ..... MNSB-53, MNSB-155
- Type of Version..... Electric
- Axis ..... 2 Axis
- Type of Machine..... Portable / hand held
- Marking Area..... 50mm x 30mm, 150mm x 50mm
- M/c Construction..... Robust drop resistant 30% glass filled nylon body for industrial use
- Color of Machine ..... White & Blue
- M/c Comm. .... Via Wi-Fi Hotspot inside the machine; no separate wi-fi required
- Battery ..... Powerful Lithium - battery for up to 8 hours of normal working
- Weight..... Light weight only 2.4 kg, 3.4 kg
- Force of Marking ..... 9 different force codes for precise depth setting
- Type of guide..... Linear guide for uniform marking depth in complete window
- Working ..... Standalone; stores design with many strings and logos
- Packaging ..... Sturdy bag for complete kit for easy storage and transportation
- Data entry ..... MNSBlauncher app on smart phones, tablets and laptops
- Battery ..... Li-ON standard battery from Makita, available in 4 capacities
- Combo Working..... Fixtures on holding stand available to use machine as tabletop
- Illumination ..... LED lights to illuminate marking area for clear visibility

**Minimum Requirements for smart phones / tablets**

- OS..... Any Android, iOS & Windows devices
- Display Size ..... 5.5 inch
- Capacity ..... 16 GB
- RAM..... 2 GB



KioWare Application



Tablet Controller

## M3 Launcher Application

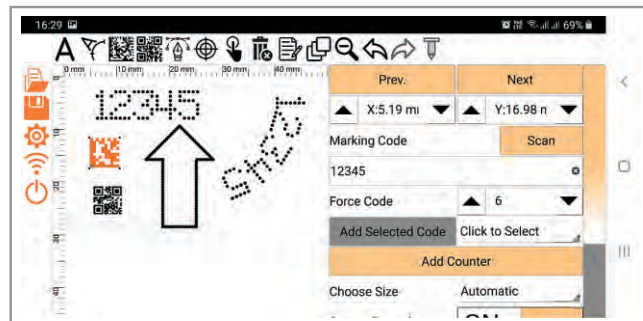
- ◆ M3 Launcher App on Play Stores
- ◆ Simple user interface, very easy to learn and be an expert in few minutes
- ◆ Available for Android, iOS and Windows Operating Systems
- ◆ Multilingual user interface in 22 different languages
- ◆ Unlimited design data storage in the mobile or tablet or PC
- ◆ Just create design and transfer/Sync to machine. No need to keep the App connected to the machine
- ◆ QR Code and Datamatrix marking available at no extra cost
- ◆ Use Mobile camera as barcode scanner from the App, no additional device required
- ◆ Video Help on use of all features of the App available directly from the App
- ◆ Easy to mark DXF, HPGL and PLT Files for marking logos
- ◆ Protect unauthorized access to designs with password protection and production mode working
- ◆ Lock a Mobile/Tablet/PC to the marking machine to prevent unauthorized machine connections
- ◆ Powerful features of Date based codes marking, Multiple reset options for incrementing counters and many more
- ◆ Different marking depths for each block with 1 to 9 force codes
- ◆ Kiosk Mode working: Use an optional Kiosk application on Android to lock all other Apps and use an Android Smart phone or Tablet as a dedicated controller. Completely lock the camera and other hardware features in this Kiosk working mode.



Carry Case for M3-53



Carry Case for M3-155



## Column Mounted Series



D2 Touch



D2 Touch Plus



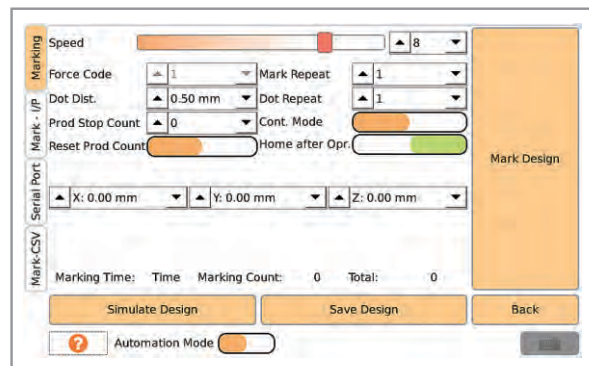
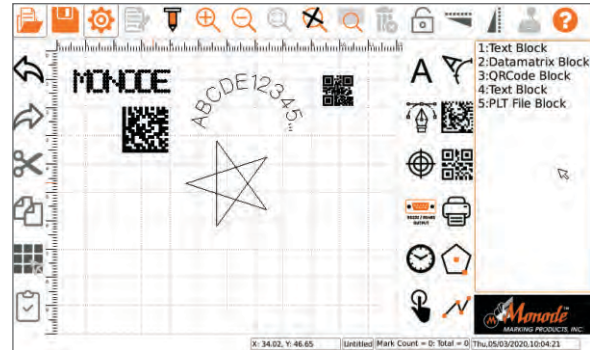
ICE

### Specifications:

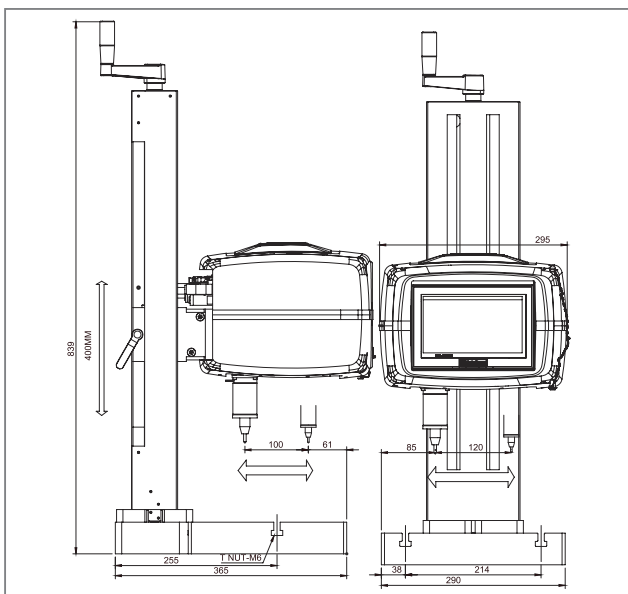
- Type of Machine ..... Tabletop Marking Machine for name plate or component marking applications
- Firing of the Pin ..... Electric
- Axis ..... Default 2 Axis machine. Easily upgrade to 3 or 4 axis working
- Power Supply ..... 24V 5A Power Adapter for Electric version. 24V 10A Power Adapter for Auto-Touch Accessory use with Electric version
- Display ..... 7" Resistive Touch Screen Display built into the Marking Head
- Storage ..... Unlimited Storage Capacity
- Force Codes ..... 9 Force Codes in Electric version to adjust depth
- 2D Bar codes ..... Datamatrix & QR Code Marking Possible
- Features ..... Normal, Inverted, Mirror, Circular, Inside Circle, Incremental Serial Numbers, Date, Variable Data, Date, Month, Year, Week, Day Codes, Array Copy, Text Block, PLT File Block, Blank Points, Timer, Wait for Start, Constant Length Marking and many more...
- Fonts ..... Dot 5×7, 7×9 & 11×16, Single Line Standard, Fast Font & Cursive Font are Fast Fonts, over 8 other Artistic Fonts.
- Logos ..... Unlimited HPGL PLT & DXF download from PC using a USB Thumb Drive
- CSV File ..... Ability to mark data from a CSV File
- Secure working ..... Lock the designer mode with password and use the Production mode for trouble free working
- Barcode Scanner ..... Ability to connect a Barcode Scanner on RS232 port and mark scanned data directly. Intelligent parsing of scanned data built into the machine
- Barcode Printer ..... Ability to directly print marking data to barcode labels from a barcode printer connected over RS232 port
- Bill Printer ..... Ability to send marking string over RS232 port and print the marking status
- Ports ..... RS232 & RS485 for I/P and O/P Comm. with PC or PLC. Modbus Communication Protocol established over RS485 for SCADA communications
- Inputs ..... 5 Inputs for automatic design selection
- Outputs ..... 2 Outputs, end of marking, machine ready for marking & error
- Industrial Comm ..... Any bus Converter Device for ProfiNET or Profibus Connectivity over RS485 Modbus

## Software Features for Column Mounted Series

- ◆ Innovative User Interface designed for touch screen, packed with lot of features
- ◆ Multilingual user interface in 22 different languages
- ◆ Unlimited Design storage facility
- ◆ Easily mark DXF & HPGL PLT Files for marking logos
- ◆ Standard Alphanumeric marking in straight, angled and circular pattern
- ◆ QRCode and Datamatrix marking available at no extra cost
- ◆ Powerful features of Date based codes marking, Multiple reset options for incrementing counters and many more
- ◆ Different marking depths for each block with 1 to 9 force codes
- ◆ Easily mark data from Excel file or Database using CSV File Marking feature
- ◆ Inputs & Outputs for easy integration with other machines and devices
- ◆ RS232 port for Serial Communication
- ◆ Modbus RTU over RS485 for PLC or SCADA communication. Also used for EtherCAT or ProfiNET or similar communications using suitable converters
- ◆ Protect unauthorized access to designs with password protection and production mode working
- ◆ Direct output to Barcode Printers over RS232 port
- ◆ Record Marking Log for tracking and eliminate manual record keeping

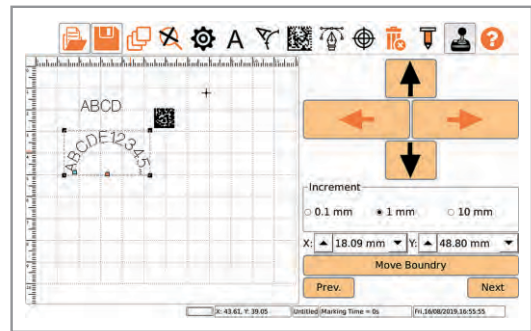
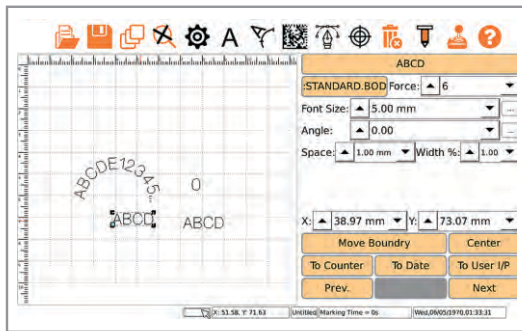


## MNS-EMHTC

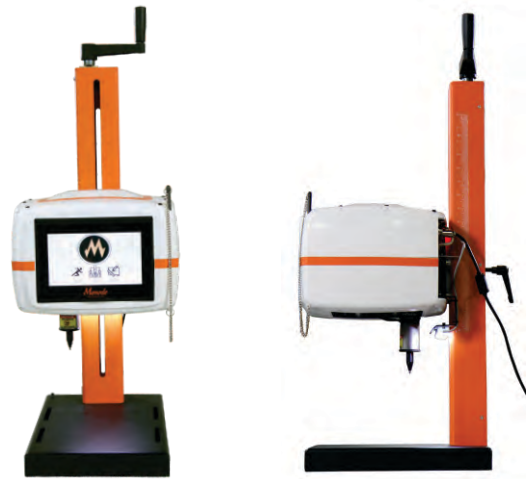
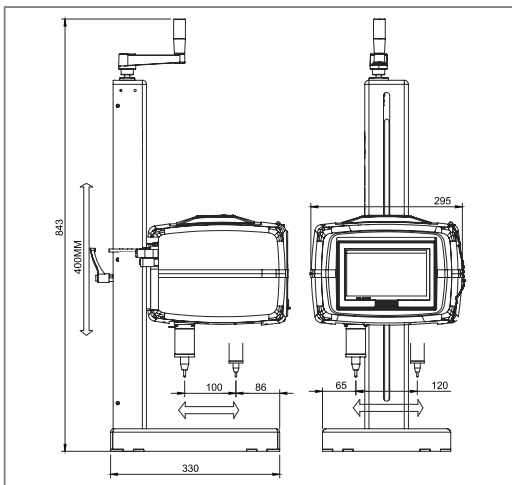


## ICE

- ◆ Simple user interface, very easy to learn and be an expert in few minutes
- ◆ Limited features sufficient for most standalone machine applications
- ◆ 120mm x 100mm marking window
- ◆ 2 in 1 machine, can use either the touch interface or connect to PC with ethernet cable
- ◆ 7" Resistive industrial grade touch screen with attached stylus pen for use
- ◆ 400mm column
- ◆ Multilingual user interface in 22 different languages
- ◆ Unlimited Design storage facility
- ◆ Easily mark DXF and HPGL PLT Files for marking logos

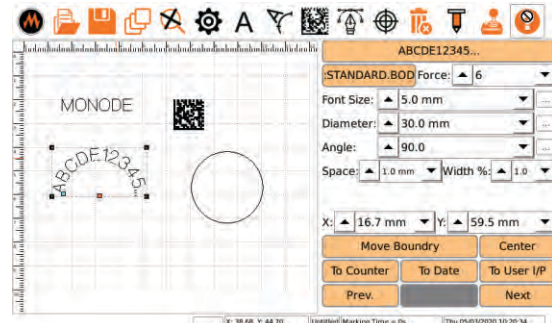


## MNS-EMTC

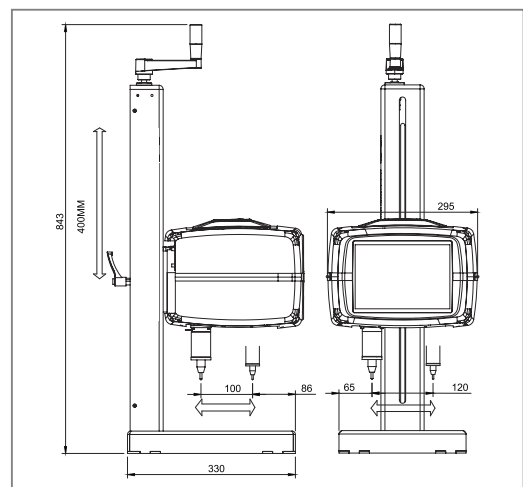


## D2 Touch Series

- ◆ 120mm x 100mm marking window
- ◆ 400mm column
- ◆ Multilingual user interface in 22 different languages
- ◆ Ethernet and Wifi Connectivity with Windows PC/Laptops/Tablets
- ◆ Easy connection to existing Intranet networks to avoid keeping a PC on factory floor
- ◆ D2 Touch 2 axis machine easily up-gradable to 3 axis
- ◆ D2 Touch Plus 3 axis machine easily up-gradable to 4 axis
- ◆ Mark alphanumeric text, DXF or PLT logos, Datamatrix or QRCode barcodes
- ◆ CSV File Marking, Barcode Printer Interface, record marking log for tracking
- ◆ Inputs & Outputs for easy integration with other machines and devices
- ◆ Optional SDK for software customization or 3rd party software integrations
- ◆ Multiple Accessories to choose for machine customization



## MNS-EMPC



## Portable Marking

- ◆ Most Compact portable markers available in 3 sizes
- ◆ 50x30mm, 80x30mm and 150x50mm
- ◆ Convenient Aluminum handle
- ◆ Available in Pneumatic and Electric versions
- ◆ Linear X & Y Axis for consistent depth across the complete marking window
- ◆ Multiple Stylus Assemblies to choose from depending on application requirements
- ◆ Military grade secure connection to the controller
- ◆ Connecting cables available in multiple lengths to suit application location
- ◆ Combo Column frame available to use portable machines for table top working
- ◆ Machines fitted with front tray as standard accessory

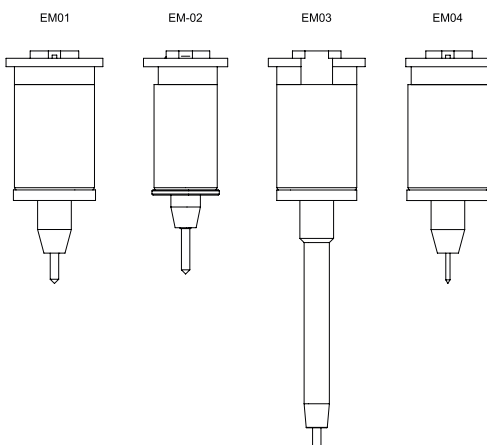


## Deep Marking Portable

- ◆ A handheld marker with robust construction for deep marking applications
- ◆ Available in 150x50mm window size
- ◆ Special Front holding attachment for better grip on the part surface
- ◆ Optional attachment with permanent magnets holding helps free operator hands

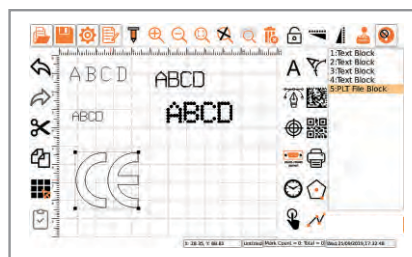
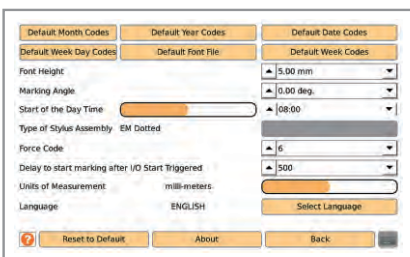
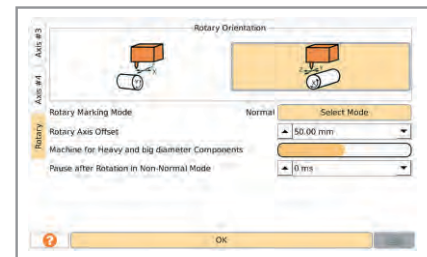
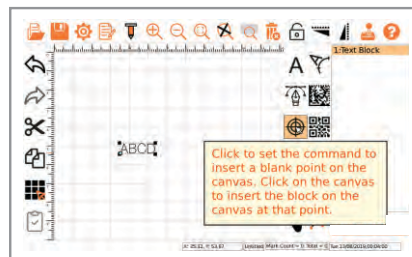
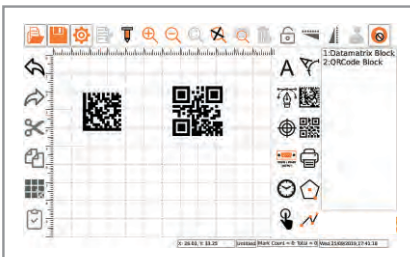


## Stylus Assemblies



## C2 Controller

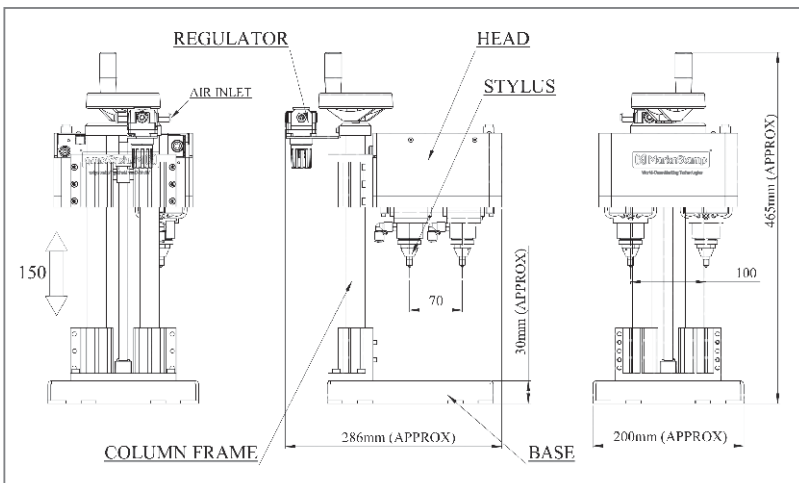
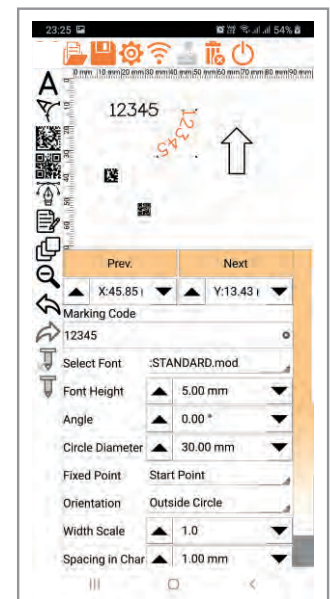
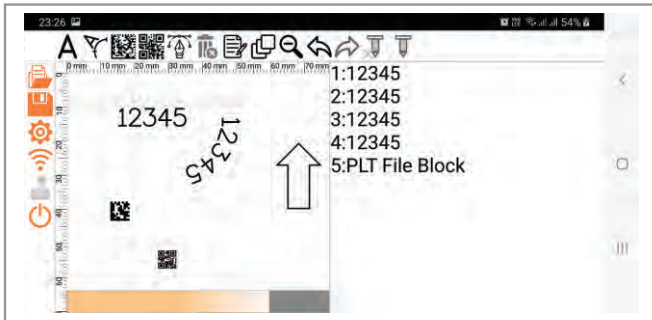
- ◆ Strong Steel construction
- ◆ Built-in fan for cooling electronics
- ◆ 7" Resistive touch screen for industrial use
- ◆ Mount controller as table top, wall mounted or Panel mounted
- ◆ Screw type military grade connectors for secure connection
- ◆ Simple to use and understand user interface
- ◆ Multilingual user interface in 22 different languages
- ◆ Powerful feature of Jog to accurately position tool w.r.t. the work piece
- ◆ Mark alphanumeric text, DXF or PLT logos, Datamatrix or QR Code barcodes
- ◆ Multiple fonts are available to choose.
- ◆ CSV File Marking, Barcode Printer Interface, record marking log for tracking
- ◆ Inputs & Outputs for easy integration with other machines and devices
- ◆ RS232 port for Serial Communication
- ◆ Modbus RTU over RS485 for PLC or SCADA communication. Also used for EtherCAT or ProfiNET or similar communications using suitable converters
- ◆ Protect unauthorized access to designs with password protection and production mode working
- ◆ USB Port for File Transfer
- ◆ On screen help on every screen





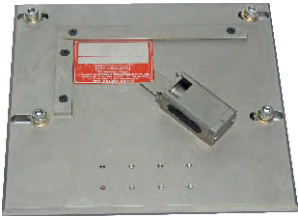
## Simple Marker

- ◆ Robust machine and holding stand
- ◆ 100mm x 70mm marking window to cover most marking applications
- ◆ Standard holding stand of 150mm height
- ◆ Communication over Wifi Hotspot of machine, no other Wifi network required
- ◆ Use standard Mobile or Tablet or Laptop for operation
- ◆ Simple to use with one button for all operations
- ◆ Use a standard 19V 1.8A adapter for power
- ◆ Drawing of accessories available for download
- ◆ Multi-color LED to indicate machine status



## Accessories

Manual Name Plate Device



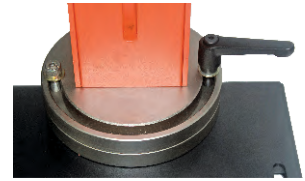
Auto Name Plate Feeder



Head Tilting Attachment



180° Rotating Fixture for CF01



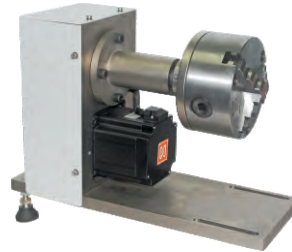
Foot Pedal



Small Rotary Device



Large Rotary Device



Independent Resting Legs



Flange Marking Attachment



Front Fixture - 'V' Groove & Magnets



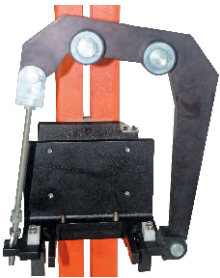
Front Fixture - 'V' Groove no Magnets



Multiple Fixtures for Face Marking



Combo Attachment



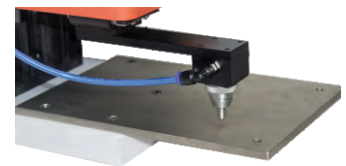
Carry Case for M3-53



Carry Case for M3-155



Marking Window Extender



300mm Column Frame





Monode Marking Products, Inc.

OFFICE: 9200 Tyler Blvd. Mentor, OH 44060

T: (440) 975-8802 | E: [sales@monode.com](mailto:sales@monode.com) | F: (440) 975-8836

W: [www.monode.com](http://www.monode.com)