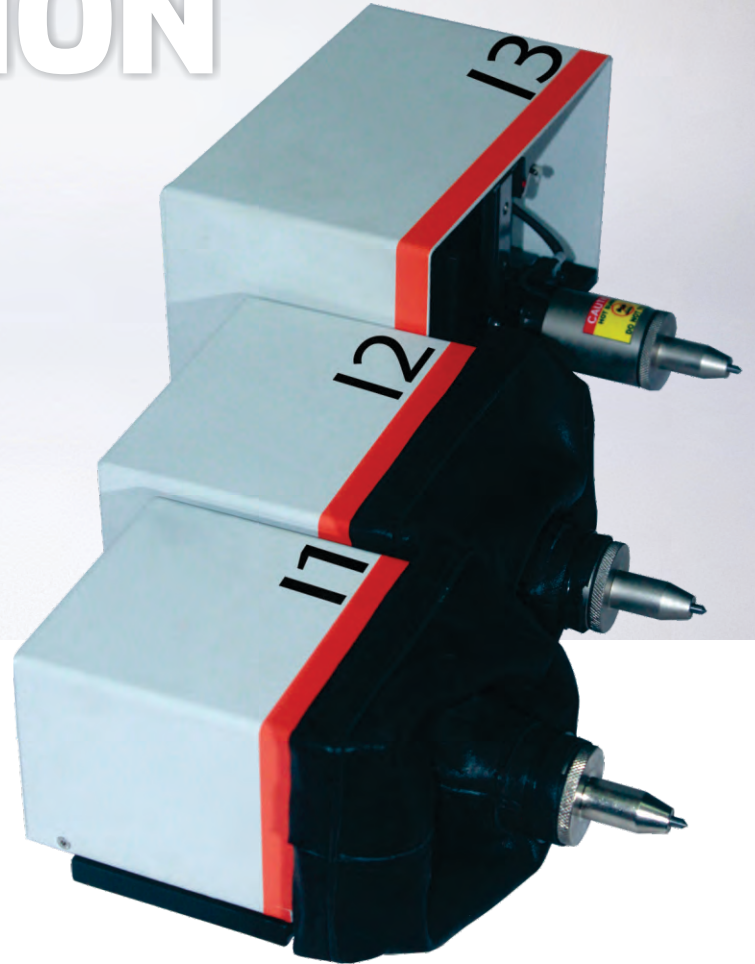


INTEGRATION

- ◆ Robust Construction
- ◆ Pneumatic & Electric Version
- ◆ Compact Sizes
- ◆ Reliable Working
- ◆ Easy to Use



CONTROLLER

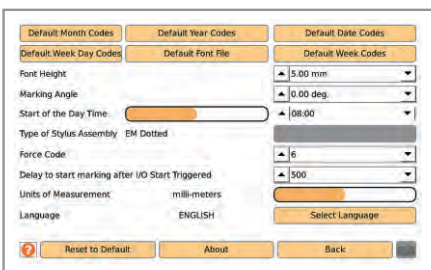
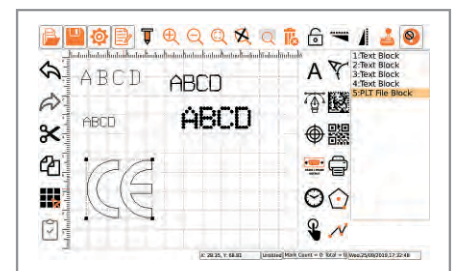
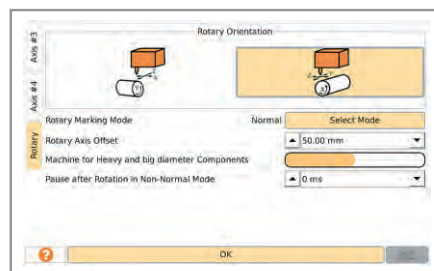
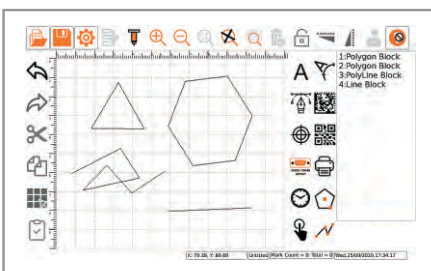
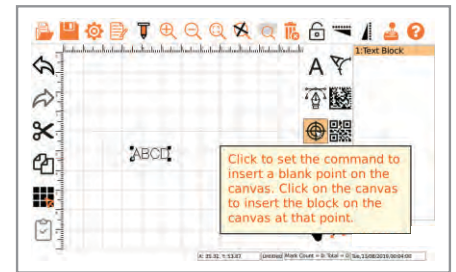
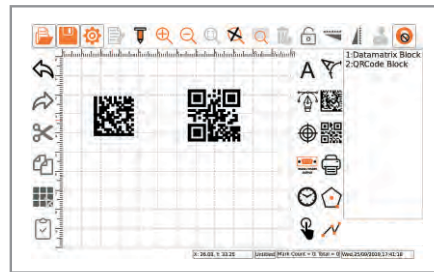
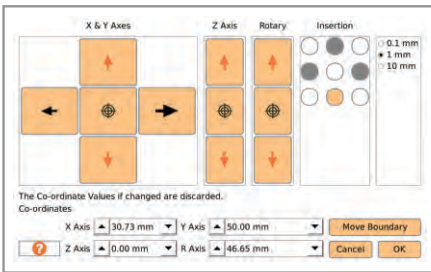


C2 Controller

- ◆ Strong Steel construction
- ◆ On screen help on every screen
- ◆ 7" Resistive touch screen for industrial use.
- ◆ Mount controller as table top, wall mounted or Panel mounted.
- ◆ Screw type military grade connectors for secure connection.
- ◆ Simple to use and understand user interface
- ◆ Multilingual user interface in 22 different languages, so easy to understand worldwide.
- ◆ Powerful feature of Jog to accurately position tool w.r.t. the work piece
- ◆ Available as Pneumatic or Electric versions
- ◆ Mark alphanumeric text, DXF or PLT logos, Datamatrix or QR Code barcodes.
- ◆ Multiple fonts are available to choose.
- ◆ CSV File Marking, Barcode Printer Interface, record marking log for tracking.
- ◆ Inputs & Outputs for easy integration with other machines and devices.
- ◆ RS232 port for ASCII & Modbus RTU over RS485 for PLC or SCADA communication. Used for EtherCAT / ProfiNET or similar communications using suitable converters.



- ◆ Protect unauthorised access to designs with password protection and production mode working.
- ◆ USB Port for File Transfer

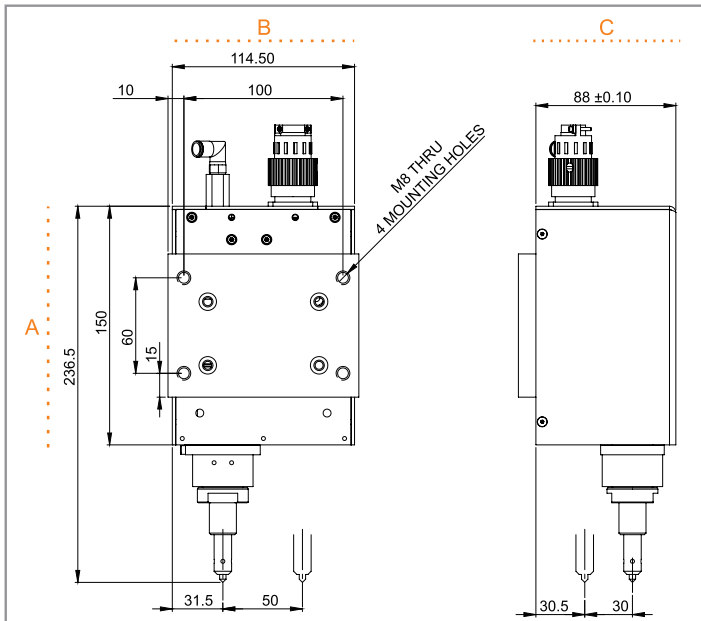


Integration Heads

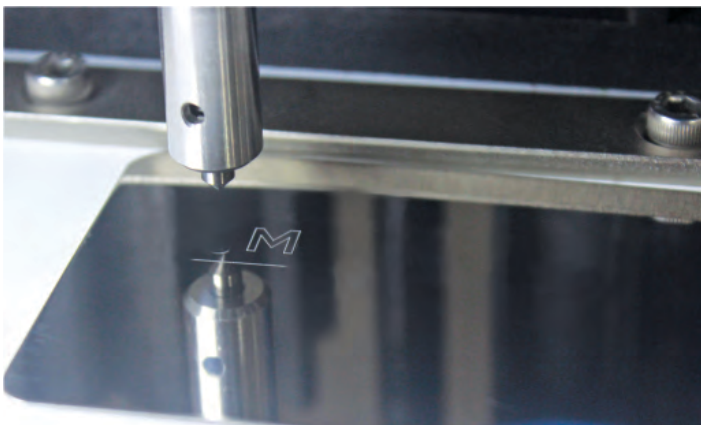
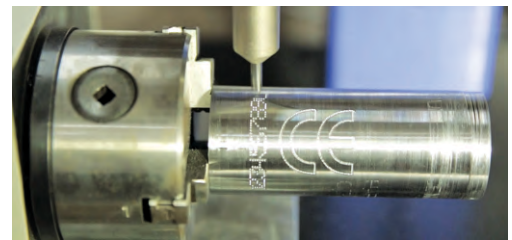
- ◆ Compact marking heads for easy placement and approach on automation devices
- ◆ Mounting with 4 M8 Screws for secure and safe mounting.
- ◆ Small heads available with Rexton Bellows for protection from dust and ingress.
- ◆ Large windows size of 50x30 mm in a very compact form factor
- ◆ Electronic
- ◆ Rugged Aluminum construction to suit industrial environments
- ◆ Linear X & Y Axis for consistent depth across the complete marking window



Line Diagram of SIA Machine



- ◆ Multiple Stylus Assemblies to choose from depending on application requirements
- ◆ Military grade secure connection to the controller
- ◆ Connecting cables available in multiple lengths to suit application location
- ◆ Use optional holding stands for table top working



Range of SIA Machine

Model Name	Marking Window (mm)	Weight
I1	50 x 30	2.5 Kg
I2	80 x 30	2.7 Kg
I3	150 x 50	3 Kg
I4	120 x 100	7.3 Kg

Portable Marking

- ◆ Most Compact portable markers available in 3 sizes
- ◆ 50x30mm, 80x30mm and 150x50mm
- ◆ Convenient Aluminum handle
- ◆ Electric
- ◆ Linear X & Y Axis for consistent depth across the complete marking window
- ◆ Multiple Stylus Assemblies to choose from depending on application requirements
- ◆ Military grade secure connection to the controller
- ◆ Connecting cables available in multiple lengths to suit application location
- ◆ Combo Column frame available to use portable machines for table top working
- ◆ Machines fitted with front tray as standard accessory



Deep Marking Portable

- ◆ A handheld marker with robust construction for deep marking applications
- ◆ Available in 150x50mm window size
- ◆ Special Front holding attachment for better grip on the part surface
- ◆ Optional attachment with permanent magnets holding helps free operator hands



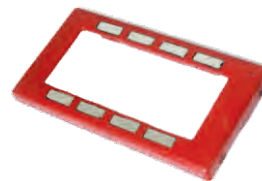
Accessories



Combo Attachment



Stylus



Front Fixture with Magnets



Front Fixture 'V' Groove with Magnets

Monode Marking Products, Inc.

Office:

9200 Tyler Blvd., Mentor, OH 44060

T: (440) 975-8802 | F: (440) 975-8836

E: sales@monode.com | W: www.monode.com